

NAMBUNJU NICKEL PROJECT

DARSA INVESTMENT LIMITED

1.0 DARESA INVESTMENT LIMITED NICKEL PROJECT

1.1 NAMBUNJU – KILWA DISTRICT - LINDI REGION NICKEL PROJECT SYNOPSIS

1.1.1 OVERVIEW

Daresa Investment Ltd garneted and recommended prospecting licences are located in the Kilwa District within the Lindi Region of Tanzania. Daresa holds 6 prospecting licenses being explored through an extensive field mapping, geological mapping , drilling and sampling activities. Prospecting licences has shown potential for Nickel – Copper – Iron prospective areas. Daresa Investment Ltd ground holding covers a total area of **905.51** sq. kms .

1.1.2 LOCATION

Daresa Investment Ltd properties are located in the south-east of mineral-rich Tanzania. The licences are located in close proximity to numerous other nickel rich deposits and advanced projects, including Ntaka Nickel and Ngwena Nickel Projects to the south . The Licences are located in Lindi region, entirely surrounded by the Base Metal and coloured stones licences . Daresa Investment Ltd is investigating the areas through geological mapping, pitting , trenching , geophysical survey and drilling.

2.0 PROJECT LOCATIONS AND ACCESS

- The Nambunju Project consists of a large land holding located in southern Tanzania with a huge opportunities on a resource of base metals with nearby known occurrences Ni, Cu, Au and graphite.
- Located within the wider Nachingwea Project area,
- High grade zones – recent drilling results reported
- Zones of known mineralization with intervals of up to 1.03% nickel.
- Exploration search space within 45km by 50 kms significantly increased recent exploration programs.

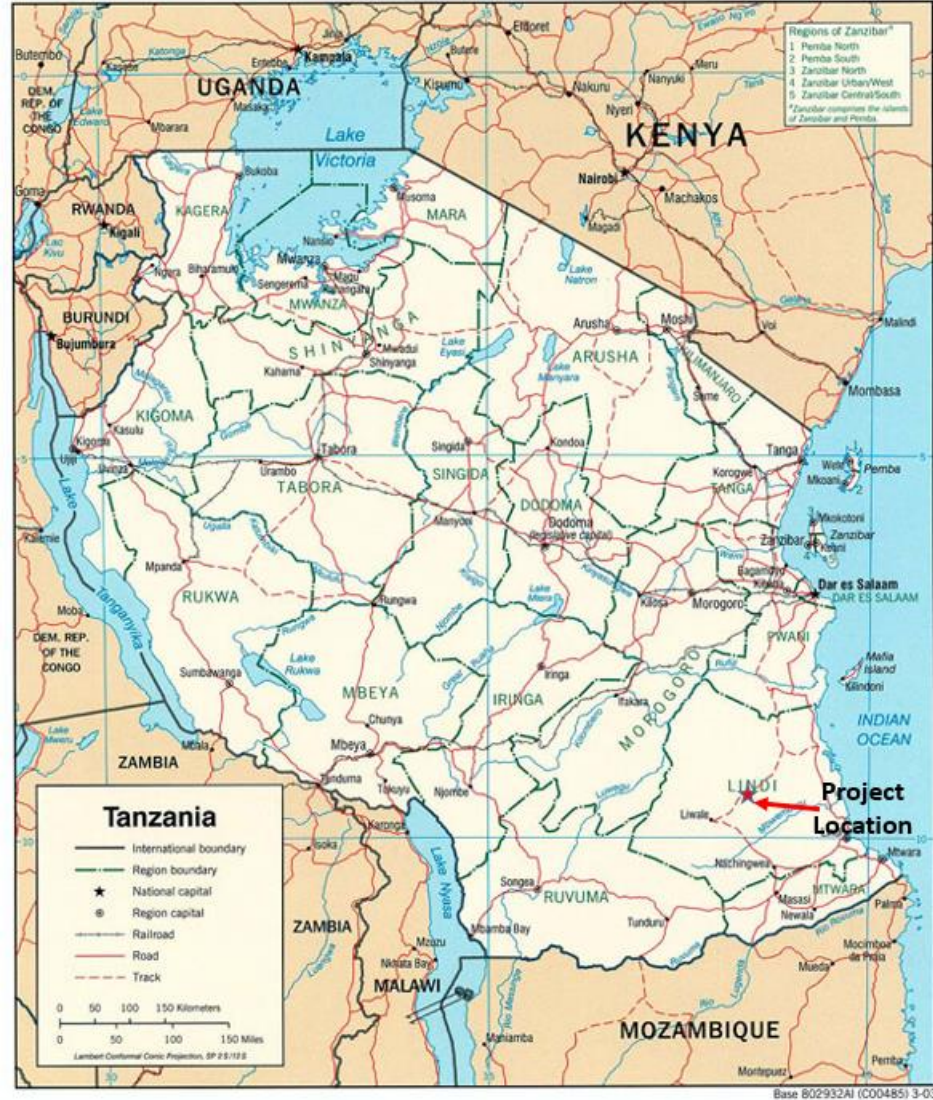


FIGURE 1- DARESA LICENCES ON TANZANIA MINING CADASTRAL PORTAL

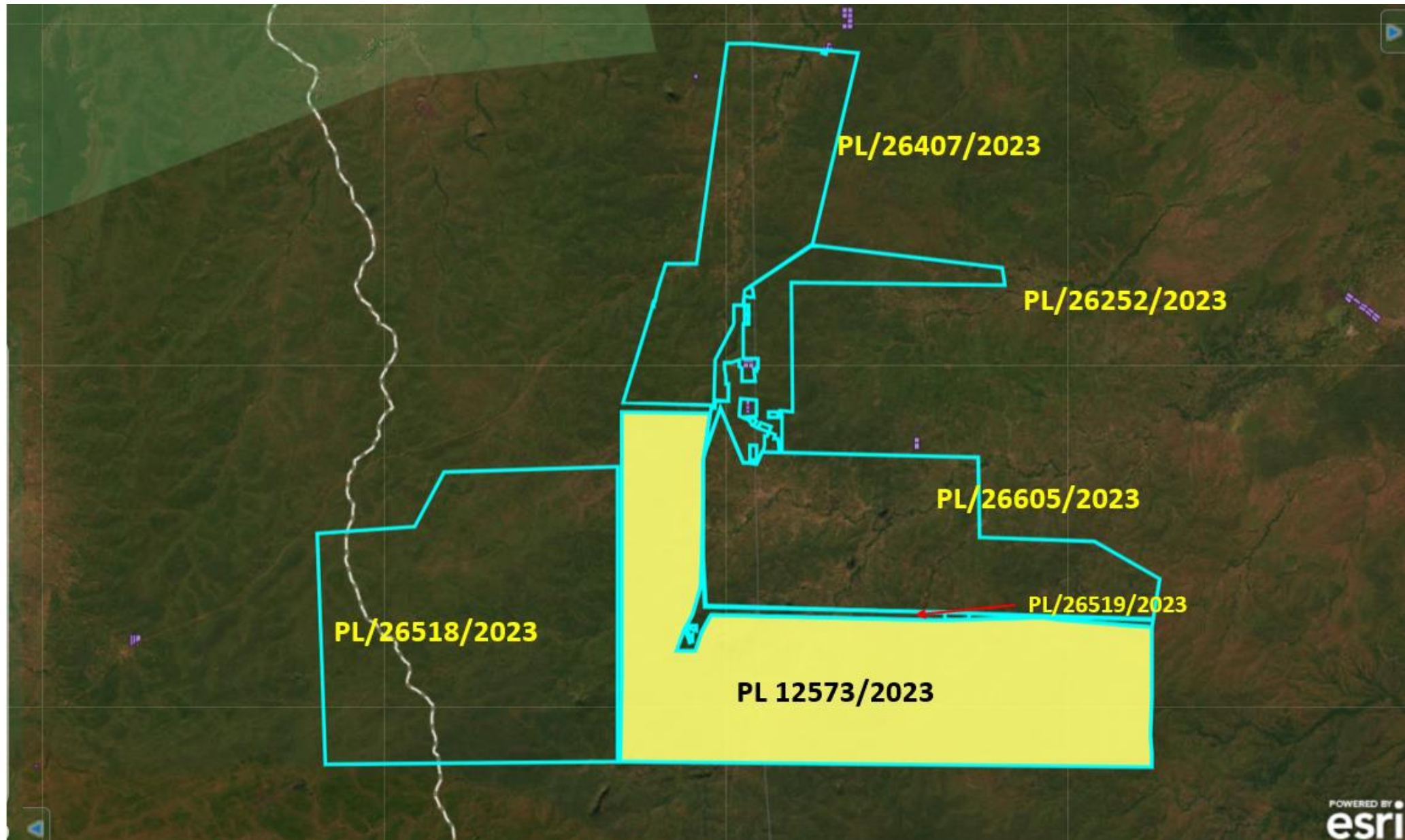
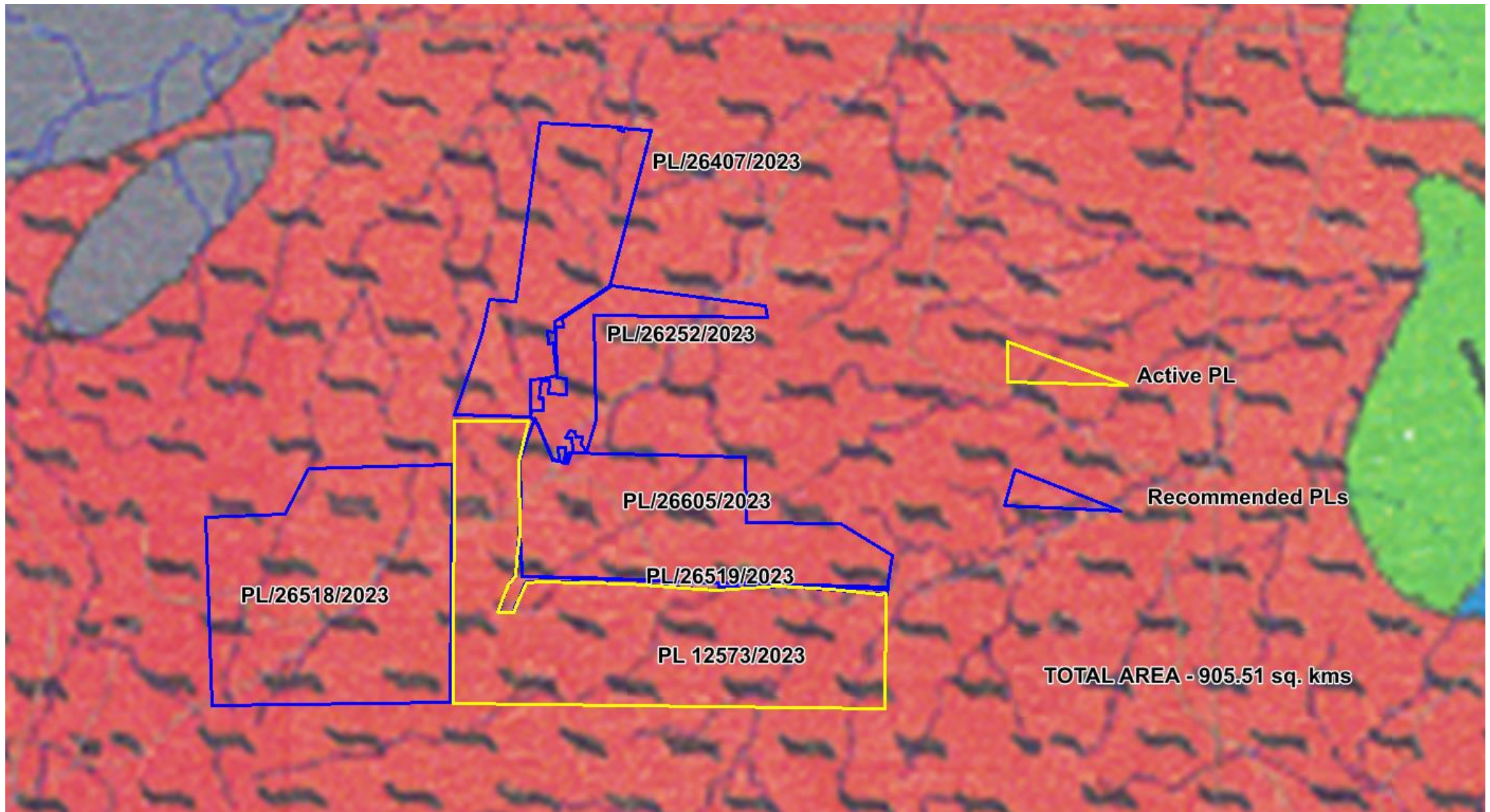


FIGURE 2- DARESA LICENCES ON TANZANIA GEOLOGICAL MAP



PROGRAM ON DARESA INVESTMENT LTD LICENCES

Daresa Investment Ltd carried out Exploration activities on the licences including :-

- Literature Review
- Data Appraisal
- Reconnaissance mapping
- Grab rock sampling with assays received from GST lab in Dodoma grading to 1.03% Ni.
- Reverse Circulation Drilling with 796 metres drilled in 18 holes drilled with a total of 1506 samples taken and assayed at SGS Mwanza, returned assays gave grade up to > 1% Ni.
- a drone was flown to record the licences information, including topography, vegetation and ongoing activities.



Field Crew during drilling program

GEOLOGY AND MINERALIZATION

- The project lies within the late Proterozoic aged Mozambique Belt in a geological setting similar to the Ntaka Nickel Intrusion project approximately 60 kms south, in which exploration identified six separate, high grade magmatic nickel-copper sulphides zones with similar geological setting to Nambunju project.
- In the general the Nambunju Nickel Project area, Mozambique Belt (MB) lithologies consist of a mixed assemblage of mafic to felsic granulites, gneisses, and migmatites (interpreted to represent volcanic protoliths) interlayered with amphibolites and metasedimentary rocks, including quartzites, banded magnetic quartzites, pelites, graphitic schists and marbles. These lithologies are cross-cut by poorly documented mafic to ultramafic intrusions of unknown age similar to the Ntaka ultramafic intrusion.
- recent drilling results reported low grade in mafic intrusives intervals of up to 0.3% nickel within wide intersections of disseminated mineralization

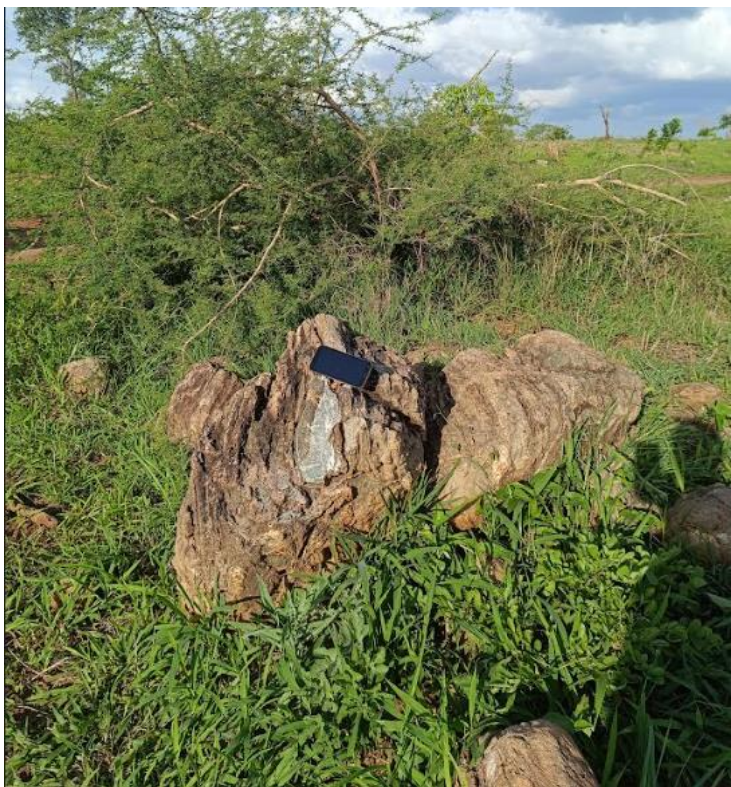


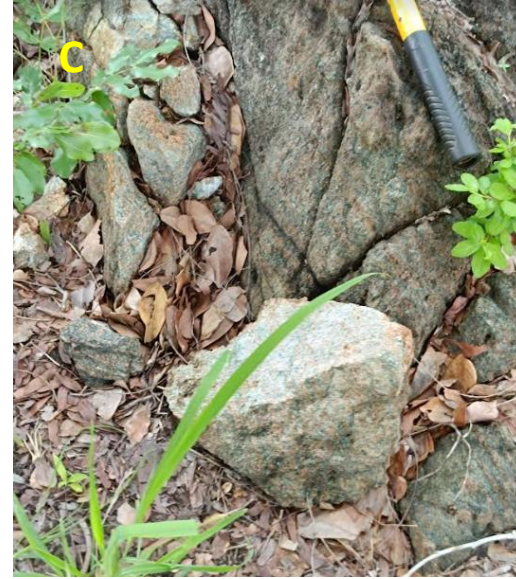


Reverse Circulation Drilling with 796 metres drilled in 18 holes drilled with a total of 1506 samples collected.



Chips from Reverse Circulation (RC) Drilling





Clockwise

A- Pegmatite B- Amphibolitic gneiss chips C – Chlorite altered Gneiss D, E and F - Field Crew on Exploration missions .